



# EVENTS GUIDE



# THE RESTAURANT

Gymkhana is inspired by the elite clubs of India where members of high society socialise, eat, drink and play sport.

The restaurant is split over two floors each with their own distinctive look and feel. The Ground Floor is resplendent in tones of jade green, polished dark timber and rich printed fabrics inspired by residential mansions of Kolkata and Pondicherry.

A walk down the mirrored staircase will take you through to the Lower Ground Floor - a room with a vivid and warm colour palette with subtle elements of north Indian architecture woven into the design.

Located above Gymkhana is 42, an exclusive cocktail lounge available for drinks receptions.



THE GROUND FLOOR



THE LOWER GROUND FLOOR









KID GOAT METHI KEEMA,  
SALLI, PAO



WILD MUNTJAC BIRYANI



LAMB SHANK ROGAN JOSH

## THE FOOD & DRINK

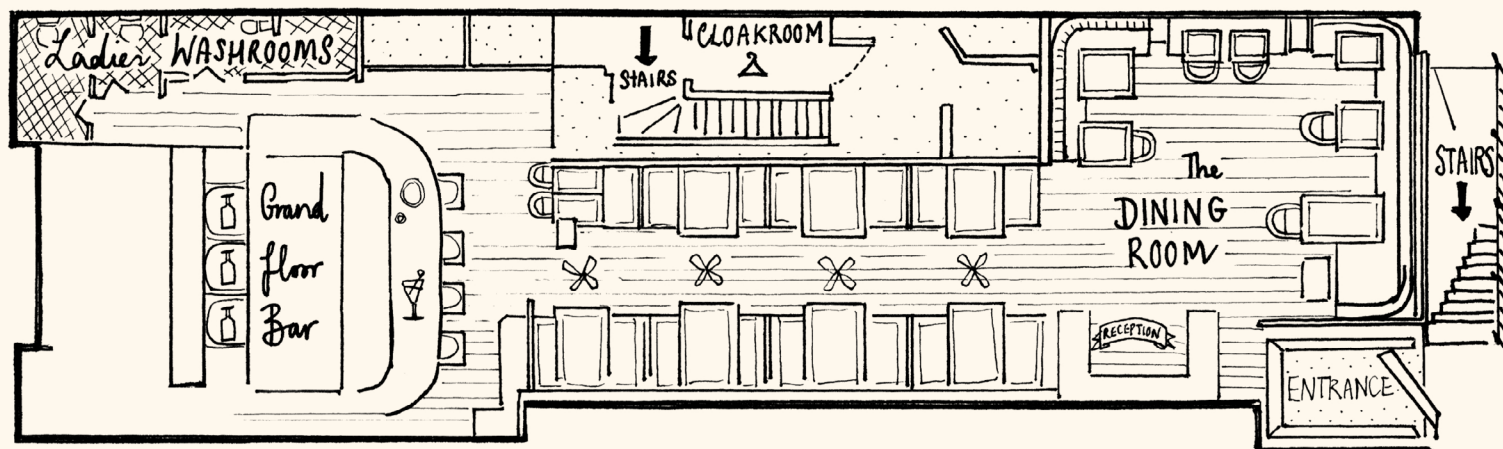
Gymkhana was awarded one Michelin star in 2014, two Michelin stars in 2024 and serves contemporary

Indian cuisine using seasonal British ingredients, with a focus on the tandoor and chatpatta sharing dishes.

A selection of menus are available for those hosting a private event at Gymkhana. Choose from our five course tasting menu or work with the events team to create a menu specifically tailored to your occasion.

The Gymkhana bars specialise in our collection of Club Cocktails and use key Indian ingredients at their base to reimagine drink recipes served in the elite clubs of India. A specialised gin list is perfectly complemented by Gymkhana's own tonic water.

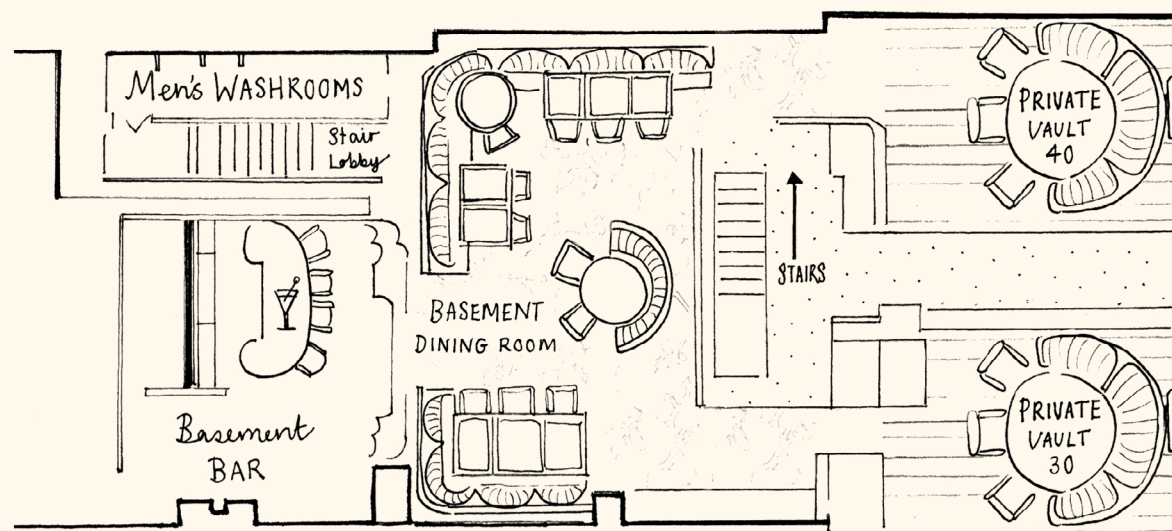




Ground FLOOR

## CAPACITIES

- Private Vault 30 - 10
- Private Vault 40 - 10
- Semi Exclusive Hire - 50
- Exclusive Hire - 100

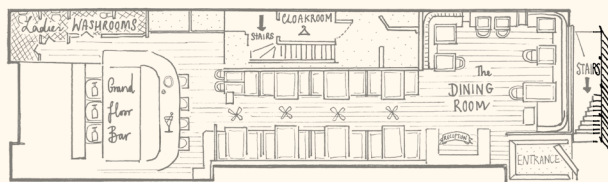


Basement FLOOR

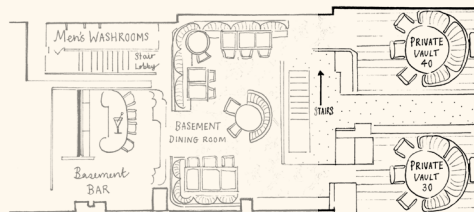


# THE PRIVATE VAULTS

Located on either side of the Lower Ground Floor the Private Vaults offer the perfect space for an intimate dinner. Private Vault 40 seats a maximum of 10 guests in banquette style seating. Private Vault 30 is a semi-private vault, home to the Gymkhana wine cellar, seating up to 10 guests.



Ground FLOOR



Basement FLOOR

BOOK A VAULT



VAULT 40



VAULT 30



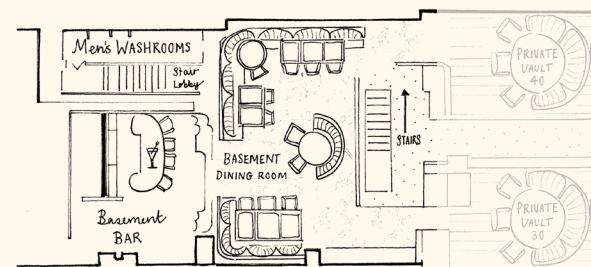
THE LOWER GROUND FLOOR



## SEMI EXCLUSIVE & EXCLUSIVE HIRE

If you are looking to host a larger event, Gymkhana is available for semi-exclusive hire on the Lower Ground Floor, accommodating up to 50 guests. This includes use of the bar area for a pre or post dinner cocktail and the Private Vaults. Or, if you wish to hire the restaurant in its entirety, Gymkhana can accommodate up to 100 guests for a seated dinner.

THE LOWER GROUND FLOOR BAR



ENQUIRE NOW



# 42

42 is an exclusive cocktail lounge located above Gymkhana at 42 Albermarle Street.

An intricately carved bar showcases a delicate design of Indian peafowl, with dusty pink and deep crimson tones reminiscent of the sunset at Jaisalmer Fort.

The cocktail lounge itself is a richer, darker affair of lavish fabrics and leathers which create a layered collection of paisleys, damasks, and embroidery.

## CAPACITIES

35 - Seated  
50 - Standing









## GYMKHANA FEATURES

Bespoke menus

Recommended live music

Florists available on request

Cloak room facilities

Audio visual equipment available on request

Gymkhana bar open until 1am

## 42 FEATURES

Late license

DJ on request

Canape menus

## CONTACT

BOOK A VAULT

ENQUIRE NOW

[gymkhanalondon.com](http://gymkhanalondon.com)







GYMKHANA  
42 ALBEMARLE STREET  
LONDON W1S 4JH